

Getting Faster: Know Your Website, and Know What's Slowing It Down

The numbers don't lie: Users prefer faster websites and applications.

There are many factors that impact the speed of your website. Some you have control over; others you do not. This paper examines the various factors that impact web performance, and the steps businesses can take to assess and improve the performance of their web properties.

PART 1

Why is performance important?

The performance of your site directly impacts your ability to generate revenue.

Performance affects both the overall user experience and conversion rates. Websites and applications need to load fast and respond to user actions quickly in order to keep users engaged and increase conversions. Performance is also an important factor in search engine optimization (SEO), meaning it impacts organic traffic.

User engagement

Research shows that users are very willing to abandon applications and websites that are slow-loading or fail to load altogether:

- The BBC discovered that 10% more site visitors left for every additional second it took for their webpages to load.¹
- 39% of users stop engaging with a website if images take too long to load.²
- On mobile devices, 53% of visits to webpages are likely to be abandoned if the pages take longer than 3 seconds to load.³

Conversely, by improving page load speed on mobile, U.S. Express experienced a 15.65% reduction in bounce rates.⁴

Conversion rates

Pages that load faster convert more users, and apps that respond faster convert more users. It's that simple, and study after study demonstrates it:

- Conversions go down 7% due to just one additional second of load time.⁵
- Walmart saw a steep drop in conversion rates as load times increased from 1 to 4 seconds.⁶
- For Pinterest, a 40% reduction in perceived load times increased sign-ups by 15%.⁷
- Even improvements of a few milliseconds make a difference: Mobify found that reducing their homepage's load time by 100 milliseconds resulted in a 1.11% increase in conversions.⁸

Unsurprisingly, conversion rate improvements result in more revenue: Mobify saw an average yearly revenue increase of close to \$380,000 as a result of their increased conversion rate.⁸

Search engine optimization and organic traffic

Search engine optimization, or SEO, is the practice of making one's Internet property more visible by improving search results placement, leading to more user clicks and more organic traffic. Site speed is a crucial part of optimizing a website for search. Google has included site speed as a factor in their search rankings since at least 2010.⁹ Because of the growing adoption worldwide of mobile devices, Google also began using mobile performance as a ranking factor in 2018.¹⁰

Mobile performance

Because mobile presents unique challenges compared to desktop, it should be considered a separate aspect of performance: a website or app must be specifically designed for mobile to ensure it will perform well on handheld devices.

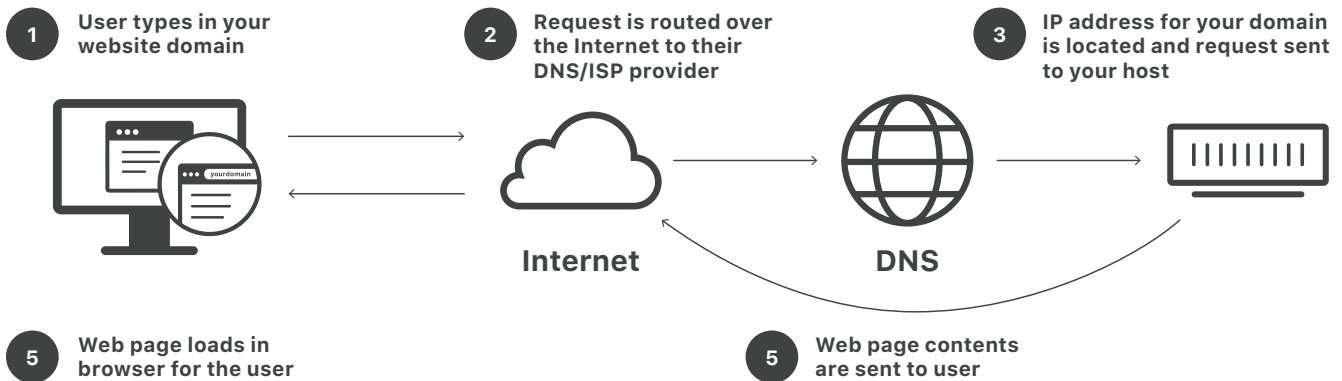
Mobile devices overtook desktop computers in terms of number of Internet connections in 2016: In October of that year, mobile devices and tablets accounted for 51.3% of Internet usage.¹¹ A 2017 survey from venture capitalist firm Kleiner Perkins found that, on average, users spent 3.1 hours per day on mobile and 2.2 hours on desktop.¹²

Consequently, mobile performance is hugely important for businesses:

- 40% of Internet transactions occur on mobile devices.¹³
- Users abandon 53% of mobile sites if they take over 3 seconds to load.¹⁴

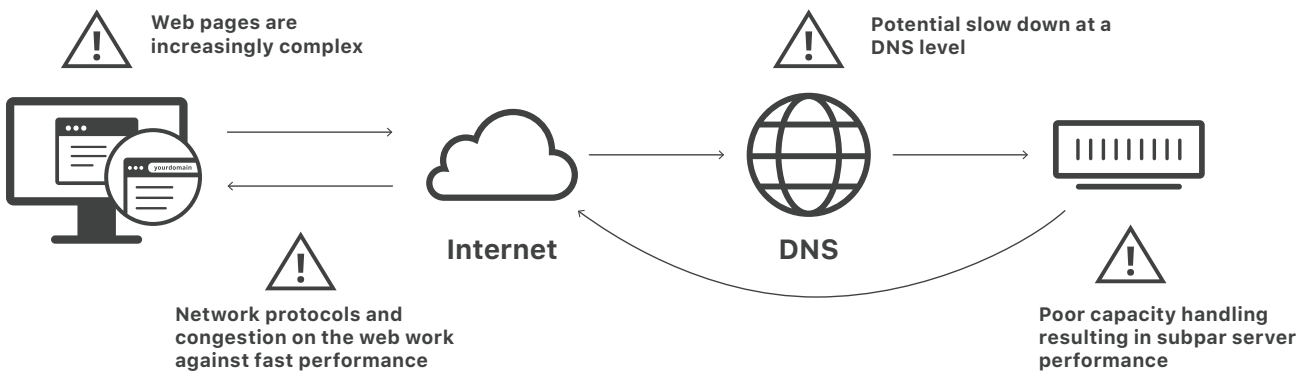
PART 2

What affects performance?



The Internet today is not what it was even five years ago. Webpages and web applications are heavier and more dependent on external resources and services. Application backends are more complex thanks to the continued evolution of cloud technology and changes in Internet protocols. Users are accessing the Internet on a wider variety of devices than ever before.

As a consequence, maintaining performance has become more of a challenge than ever. And yet performance has likely never been more crucial for businesses. Let's take an in-depth look at the trends impacting performance today.



The complexity of web content

Webpages are increasing in size

In 2016, the average webpage was 2.3MB in size, which is larger than the original version of the classic computer game “Doom” when it was first released.¹⁵ Websites have only gotten heavier since then.

As technology improves, users expect richer and more personalized user experiences that incorporate various types of media. Simple HTML does not cut it anymore. As a result, the average single page today is larger than a classic video game.



To keep users engaged, apps and websites today are adding more and more:

- **Rich media** content such as video and high-quality images
- **CSS:** Style sheets that impact the look and feel of a page
- **JavaScript:** Dynamic webpages and personalized content are the norm. As a result developers include ever more JavaScript that needs to render.
- **API calls:** Increasing API network calls that deliver content or additional functionality from multiple third-party sources.

While these changes make for the richer, more personalized experiences that users prefer¹⁶, they make it more difficult to build Internet properties that load efficiently and respond quickly.

Increased consumer expectations and the usage of mobile

Today's consumers are more connected than ever, and this increases the demand on the backend infrastructure supporting websites and applications. Users connect to apps and websites from around the globe, on all kinds of devices. A 2016 Nielsen survey found that 57% of respondents who made an online purchase in the past six months bought from an overseas retailer.¹⁷

Mobile is the new benchmark for web performance. However, building for mobile presents a new set of challenges. Mobile performance is constrained by network connectivity and availability. Despite the widespread availability of 4G and 5G networks in some countries, 60% of mobile connections worldwide are over 2G.¹⁸ And in some regions, mobile network providers will throttle bandwidth past a certain amount.¹⁹ Adapting webpages for mobile also means screen real estate is a challenge. Webpages have to be designed so that they're still readable and usable on mobile.

Despite these challenges for developers, mobile users have high performance standards for their apps: one study by Dimensional Research found that 49% of users expect apps to respond in 2 seconds or less, 55% hold the app responsible for performance issues, and 80% indicated they will only attempt to use a problematic app three times or less.²⁰



DNS

Before user devices can connect to Internet properties, the user-facing name of the Internet property—the domain name—has to be translated into a machine-readable IP address, similar to how you have to look up a business’s phone number before contacting the business. For this to occur, the user device has to query a DNS resolver that will map the domain name to the IP address and send the correct IP address to the device. This process takes time, and thus optimizing DNS is an important part of optimizing performance.

In addition to DNS lookups for the main domain name, other DNS queries may be necessary to load other resources on each webpage. For instance, if images are hosted on a different domain than yours, then loading a webpage will involve querying all those different domains in order to load the images. Multiple DNS lookups can add up to several seconds’ delay in some cases.

DNS providers may not be optimized for speed. If a user’s first stop is to a slow DNS provider a long way away, then it will take longer for your website to load.

Many DNS providers take over 50 milliseconds to resolve each DNS query, while the fastest DNS providers will resolve queries in under 20 milliseconds – Cloudflare DNS, for instance, resolves queries in under 12 milliseconds on average.²¹



Origin server health

Performance starts with the origin servers: the primary servers that process and respond to incoming client requests. As applications and websites become more complex, they put a greater strain on origin servers. Slow origin server performance results in sluggish performance overall, even if the rest of a web property’s infrastructure and content is optimized.

Research by the Nielsen Norman Group shows that response times should be no longer than 1 second in order to avoid interrupting a user's train of thought.²² If a server cannot handle at least 1 request per second, the user will perceive the application as performing slowly.

Unevenly distributed server workloads

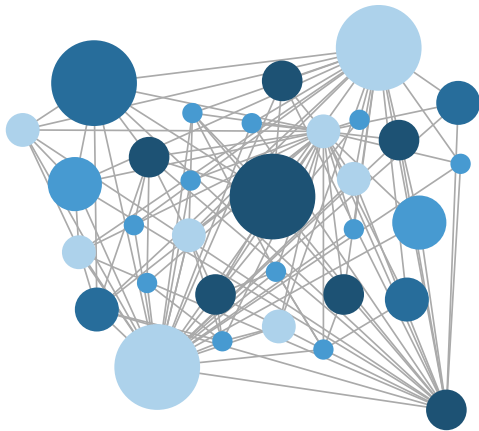
Over-utilized servers will run more slowly, adding unnecessary latency and impacting the user experience. If some servers have too much of a workload while other servers are under-utilized, the workload needs to be distributed more evenly across the servers in order to maximize performance.

The differences can be stark between an application with effective load balancing and an application without it. One SaaS company experienced a 2-3 second improvement in page load times after deploying Cloudflare Load Balancing.²³

Server crashes

Like all computers, servers sometimes crash. A 2017 survey by ITIC Corp found that some servers experienced up to 37 minutes of unplanned downtime a year on average, while the most reliable servers—IBM Z Systems with Linux—were down for only 0.9 minutes per year.²⁴

If there is no strategy in place for failover, server downtime can result in slower service for users, or a loss of service altogether.



Network factors

The Internet is made up of large interconnected networks. As data travels from one point to another, it passes through any number of routers, switches, and networks to reach its destination. Therefore, a number of network factors can slow down or impact performance. Some of these factors are outside your control, but you can take steps to optimize many of them.

Internet protocols that impact performance

The networking protocols in use on the Internet were not built for the Internet today, with its massive scale, enormous user base, and terabytes of data flowing back and forth around the globe.

TCP (Transmission Control Protocol) is the primary protocol used on the web. This transport protocol involves a back-and-forth acknowledgement in order to open a connection between the client and the server. Once the connection is open, TCP ensures that the transmission is reliable by checking that all data arrives and is in order. This emphasis on reliability means that TCP is not the fastest transport protocol available—however, most of your website will reach users via TCP.

UDP (User Datagram Protocol) is a much faster transport protocol than TCP, but it is also much less reliable. Unlike TCP, UDP does not open a dedicated connection between devices before transmitting data, and it does not ensure that all data packets arrive and are in order. UDP is extremely useful for video streaming, voice calls, and other use cases where speed matters more than reliability, but its usage is limited to these use cases.

HTTP is an application-layer protocol, which means it is the protocol just beneath the surface of web applications. All user interactions are translated into HTTP requests that are sent to the origin server, and all server responses are also in HTTP. Newer versions of HTTP are faster and more efficient: HTTP/2, released in 2015, is faster than HTTP/1.1. If your website is still served over HTTP/1.1, users may experience slower performance than they would over HTTP/2.

TLS, or Transport Layer Security, is a protocol for encrypting Internet traffic and helping ensure that devices connect to legitimate servers. While TLS is absolutely necessary for security, especially as consumers depend more on the Internet, running older versions of the TLS protocol can slow down load times. The latest version of TLS, TLS 1.3, eliminates several steps in the protocol for a faster connection. (TLS is also known as SSL, which was the original name for the protocol in the 1990s.)

The network from the server to the client (including cellular networks)

Users access Internet properties from all kinds of networks, and network conditions play a huge role in how well your website or app performs.

Network latency is partially caused by distance. The farther a user is physically from an origin server, the more latency there will be. The speed of light is a hard limit on how fast data can travel, and data will take from a few milliseconds up to nearly a second to travel from the user to the server and back. (The effects of network latency can be somewhat reduced by using a CDN—content delivery network—to cache content closer to users.)

Network congestion occurs when network traffic exceeds bandwidth at a certain point on the network, whether that's within an Internet Exchange Point (IXP), in a data center, or on a LAN router in a home. The resulting network congestion leads to slower Internet speeds for anyone connected to the network. Network congestion can be limited to a certain geographic area that lacks sufficient infrastructure, or it can affect an entire ISP's network.

Mobile networks are often unreliable, although consumers increasingly rely on them for Internet access. The quality of service over a mobile network depends upon the user's location, the amount of bandwidth offered by their cellular provider, and many other factors. While mobile networks are improving around the world, some parts of the world still struggle with cellular reliability and connectivity.¹⁸

PART 3

**What steps can you take
to assess and improve
performance?**

Run a site speed test

How a site performs in a local testing environment is not a good indication of how it will perform for users across a variety of network conditions.

Website speed tests aim to simulate real-world conditions and provide data on how well a website actually performs. The best website speed tests should let you know not just how fast their site or application is, but also what aspects of it are slowing performance.

Speed tests can provide a variety of metrics, including:

- **Load time:** how long it takes for a web browser to finish downloading and displaying the webpage
- **Time to First Byte (TTFB):** how long it takes for the browser to receive the first byte of data from the web server
- **Requests:** the number of HTTP requests that a browser makes in order to fully load the page

For more speed test performance metrics, see **Appendix: Performance Metrics to Know**.

[WebPageTest.org](https://www.webpagetest.org) is a well-respected and thorough free testing platform. [Google PageSpeed Insights](https://pagespeed.google.dev/) can also help you assess your website.

Additionally, Cloudflare offers a [simple testing](#) tool for assessing load time, TTFB, and total requests.

Assess origin server health and load

Monitor server health

Server performance can degrade for a variety of reasons: Server hardware can break down, or server software may become outdated, for instance. The average lifespan of a server is about 5 years.²⁵ Servers should be monitored constantly to ensure their health and availability.

Check server load

If origin servers are overloaded, they will perform slowly. Check the memory utilization of your servers. Are some machines working harder than others? Are some servers using all of their compute power while others aren't? To get the most performance out of your servers and utilize server resources efficiently, it's important to balance workloads across multiple servers.

Offload some content requests via caching

If every user request has to be fulfilled by the origin servers, they may become overloaded. By implementing caching—in the browser, at the network edge (using a CDN), or both—many, if not most, round trips all the way to the origin server can be eliminated.

Identify where site traffic comes from

One of the principal causes of network latency is distance, so the location of users matters a great deal.

For instance, it takes longer for Internet traffic to travel the nearly 16,000 kilometers from New York to Sydney (80 ms) than to travel the 4,000 kilometers from New York to San Francisco (21 ms).²⁶ If a website is hosted in the U.S. but most of its users are in Sydney, then most of the users will experience slow performance.

[Google Analytics](#) is a helpful tool for determining where users are coming from geographically. Once you've identified where site traffic comes from, you can figure out whether or not your web property's infrastructure is set up to serve those locations effectively.

Audit and optimize site images

The user's browser needs to download images before they can be displayed. The larger an image is (in terms of file size, not dimensions), the longer it takes to download. Large images often add to the load time of a webpage unnecessarily, as many devices don't have good enough screen resolution or a large enough screen to make very high resolution images necessary.

Before images can be optimized, you should determine how many images your website has and where they are located by conducting an image audit. Following the audit, as many images as possible should be optimized—meaning, compressed, resized, and converted to a lossy file format such as JPEG. Optimized images will load much more quickly.

[Moz.com](#) has step-by-step instructions for crawling all images on your website, identifying which ones need to be optimized, and optimizing them. [Screaming Frog's SEO website crawler](#) is helpful for auditing website images.

There are [many free image optimizer tools](#) available online. Adobe Photoshop can also compress images and export images in a variety of formats.

[Cloudflare Image Resizing](#), [Mirage](#), and [Polish](#) are the best options for companies that already deploy the Cloudflare CDN in order to cache images for faster delivery. Cloudflare Polish can be activated in the Speed tab of the Cloudflare Dashboard.

Check the current performance of your DNS provider

Identify your DNS provider, and then find out if your provider is giving you the best performance possible.

One of the best resources for measuring DNS performance is [DNSPerf](#). DNSPerf regularly tests all authoritative DNS providers and public DNS resolvers. Their results and rankings are available for free at [dnsperf.com](#).

To further improve your users' DNS experience, they can install Cloudflare's free DNS resolver service [1.1.1.1](#) for a faster, privacy-first solution.

Check user ISP network performance

Users may experience slow performance for reasons that have nothing to do with the website or app they are using. ISP network performance plays a huge role in the user experience.

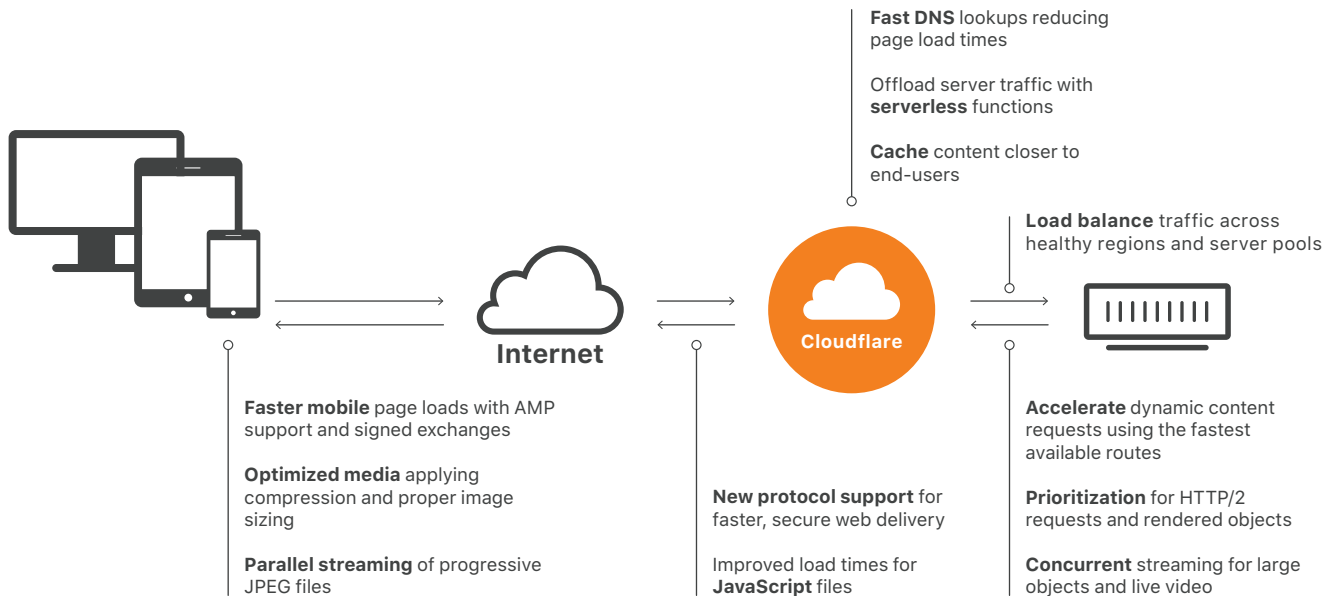
A network speed test tool can help users identify issues with their ISP on their own. Cloudflare developed [speed.cloudflare.com](#) to help users make sure they are getting the network performance they should be getting from their ISP.

PART 4

How Cloudflare solves performance issues

The Cloudflare network of data centers spans cities around the world. Each data center supports the full stack of Cloudflare performance and security services to optimize web performance across its network.

From fast web address lookups to accelerated delivery to the origin server, Cloudflare speeds up traffic at key points in the life of a request.



DNS and ISP issues

Cloudflare DNS: Cloudflare is the world's fastest and most reliable authoritative DNS provider.²¹ Cloudflare provides fast and secure managed DNS as a built-in service on its network. Cloudflare also offers **1.1.1.1**, which is a public DNS resolver that keeps DNS queries private.

For consumers, **Cloudflare Warp** accelerates Internet access from mobile handsets. The **Cloudflare Speed Test** at speed.cloudflare.com helps users assess their ISP network's performance.

Network

The Cloudflare **CDN** spans a global network of data centers that cache content closer to users so that requests don't need to travel long distances to origin servers.

Cloudflare optimizes network traffic speeds in several ways.

Cloudflare Argo Smart Routing: Argo delivers dynamic web content over the fastest links available, resulting in noticeably faster delivery and improved end-user experience.

Cloudflare supports the **latest web standards** and protocols, including HTTP/2 and QUIC (HTTP/3) for faster application layer data transmission, TLS 1.3 for more efficient SSL encryption.

Cloudflare supports the use of **Signed Exchanges with Google AMP**, providing native URL attribution when viewed in the AMP viewer.

For mobile apps, the **Cloudflare Mobile SDK** provides mobile network performance analytics that can be integrated into any app.

Content optimization

Cloudflare offers a number of **image optimization** features, including Image Resizing, Polish, and Mirage. Image Resizing allows customers to optimize images by resizing, cropping, compressing, or converting them to WebP, a newer image format designed for fast loading. Cloudflare also enables **parallel streaming of progressive images** to speed up delivery of multiple images on a page.

Video is hugely important for user engagement, and Cloudflare has several products and features for optimizing video. **Cloudflare Stream** is an online video platform for streaming media, and **Stream Delivery** ensures videos stream as fast as possible. Cloudflare offers **Concurrent Streaming Acceleration** for live streaming content as well.

Prioritization, or the order in which the assets on a webpage are loaded, makes a huge difference to page load speed. **Rocket Loader** from Cloudflare optimizes the prioritization of any assets that need to load before on-page JavaScript can execute. Cloudflare also supports **HTTP/2 Prioritization** in order to control how page assets are prioritized, avoiding the slower default prioritization of most browsers. **BinaryAST for JavaScript** is supported by Cloudflare to speed up JavaScript parsing so that it executes faster—crucial for the performance of dynamic or personalized webpages.

Server health and availability

Cloudflare **Load Balancing** provides local and global load balancing to reduce latency, either by load balancing traffic across multiple servers or by routing traffic to the closest region. It also includes **health checks** with fast failover to rapidly route visitors away from failures.

Serverless computing has great potential for creating faster, more responsive apps than ever. **Cloudflare Workers** allows developers to build serverless applications that run on Cloudflare's network, closer to your users. Applications built with Cloudflare Workers are always available, with low-latency responsiveness.

Conclusion

Users today want faster, more personalized interactions when they log on or pull up an app. It's possible to build such experiences if you use the right tools. Cloudflare helps accelerate over 18 million Internet properties, enabling companies to offer their customers the best possible experience.

About Cloudflare

Cloudflare, Inc. (www.cloudflare.com / [@cloudflare](https://twitter.com/cloudflare)) is on a mission to help build a better Internet. Cloudflare's platform protects and accelerates any Internet application online without adding hardware, installing software, or changing a line of code. Internet properties powered by Cloudflare have all web traffic routed through its intelligent global network, which gets smarter with every request. As a result, they see significant improvement in performance and a decrease in spam and other attacks. Cloudflare was named to Entrepreneur Magazine's Top Company Cultures 2018 list and ranked among the World's Most Innovative Companies by Fast Company in 2019. Headquartered in San Francisco, CA, Cloudflare has offices in Austin, TX, Champaign, IL, New York, NY, San Jose, CA, Washington, D.C., Lisbon, London, Munich, Beijing, Singapore, and Sydney.

Endnotes

1. Clark, Matthew. "How the BBC builds websites that scale." CreativeBloq, <https://www.creativebloq.com/features/how-the-bbc-builds-websites-that-scale>. Accessed 22 July 2019.
2. "The State of Content: Expectations on the Rise." Adobe, <https://blogs.adobe.com/creative/files/2015/12/Adobe-State-of-Content-Report.pdf>. Accessed 24 July 2019.
3. "The need for mobile speed: How mobile latency impacts publisher revenue." Think with Google, <https://www.thinkwithgoogle.com/intl/en-154/insights-inspiration/research-data/need-mobile-speed-how-mobile-latency-impacts-publisher-revenue/>. Accessed 22 July 2019.
4. "Cloudflare Case Study: US Xpress." Cloudflare, <https://www.cloudflare.com/case-studies/us-xpress/>. Accessed 22 July 2019.
5. Rodman, Tedd. "Marketing & Web Performance: How Site Speed Impacts Metrics" Yottaa, <https://www.yottaa.com/marketing-web-performance-101-how-site-speed-impacts-your-metrics/>. Accessed 24 July 2019.
6. Everts, Tammy. "How Does Web Page Speed Affect Conversions? [INFOGRAPHIC]." Radware Blog, <https://blog.radware.com/applicationdelivery/wpo/2014/04/web-page-speed-affect-conversions-infographic/>. Accessed 24 July 2019.
7. Meder, Sam et al. "Driving user growth with performance improvements." Pinterest Engineering (Medium), https://medium.com/@Pinterest_Engineering/driving-user-growth-with-performance-improvements-cfc50dafadd7. Accessed 22 July 2019. h/t <https://developers.google.com/web/fundamentals/performance/why-performance-matters/>
8. "2016 Q2 Mobile Insights Report." Mobify, <https://resources.mobify.com/2016-Q2-mobile-insights-benchmark-report.html>. Gated. Accessed 22 July 2019. Secondary source: Runkevicius, Dainius. "Your Bottom Line Literally Depends on Milliseconds: 5 Advanced Techniques to Optimize Your Page Load Speed." The Mission (Medium), <https://medium.com/the-mission/your-bottom-line-literally-depends-on-milliseconds-5-advanced-techniques-to-optimize-your-page-6b2350a98501>. Accessed 22 July 2019.
9. Singhal, Amit, and Matt Cutts. "Using site speed in web search ranking." Google Webmaster Central Blog, <https://webmasters.googleblog.com/2010/04/using-site-speed-in-web-search-ranking.html>. Accessed 22 July 2019.
10. Wang, Zhiheng, and Doantam Phan. "Using page speed in mobile search ranking." Google Webmaster Central Blog, <https://webmasters.googleblog.com/2018/01/using-page-speed-in-mobile-search.html>. Accessed 22 July 2019.

- 11.** "Mobile and tablet internet usage exceeds desktop for first time worldwide." StatCounter, <http://gs.statcounter.com/press/mobile-and-tablet-internet-usage-exceeds-desktop-for-first-time-worldwide>. Accessed 22 July 2019.
- 12.** Meeker, Mary. "Internet Trends 2017 - Code Conference." Kleiner Perkins, <https://www.kleinerperkins.com/perspectives/internet-trends-report-2017/>. Accessed 24 July 2019. Presentation.
- 13.** "Online mobile transaction statistics." Think with Google, <https://www.thinkwithgoogle.com/data/online-mobile-transaction-statistics/>. Accessed 22 July 2019.
- 14.** An, Daniel. "Find out how you stack up to new industry benchmarks for mobile page speed." Think with Google, <https://www.thinkwithgoogle.com/marketing-resources/data-measurement/mobile-page-speed-new-industry-benchmarks/>. Accessed 24 July 2019. h/t <https://www.marketingdive.com/news/google-53-of-mobile-users-abandon-sites-that-take-over-3-seconds-to-load/426070/>
- 15.** Finley, Klint. "The Average Webpage Is Now the Size of the Original Doom." Wired, <https://www.wired.com/2016/04/average-webpage-now-size-original-doom/>. Accessed 17 July 2019.
- 16.** Laurinavicius, Tomas. "Top Web Design Trends To Watch In 2017." Forbes, <https://web.archive.org/web/20170128171620/https://www.forbes.com/sites/tomaslaurinavicius/2017/01/25/web-design-trends-2017/#1afde0b41521>. Archived Version Accessed 18 July 2019.
- 17.** "Global Connected Commerce: Is e-tail therapy the next retail therapy?" Nielsen, <https://www.nielsen.com/bd/en/insights/report/2016/global-connected-commerce/>. Accessed 23 July 2019.
- 18.** Schwarz, Ben. "Beyond the Bubble: Real world performance." Calibre (Medium), <https://building.calibreapp.com/beyond-the-bubble-real-world-performance-9c991dcd5342>. Accessed 24 July 2019.
- 19.** O'Donoghue, Ruadhán. "You've been throttled, but don't stop browsing!" mobiForge, <https://mobiforge.com/news-comment/youve-been-throttled-dont-stop-browsing>. Accessed 24 July 2019.
- 20.** "Failing to Meet Mobile App User Expectations: A Mobile App User Study." Dimensional Research, https://techbeacon.com/sites/default/files/gated_asset/mobile-app-user-survey-failing-meet-user-expectations.pdf. Accessed 24 July 2019. h/t <http://thinkapps.com/blog/post-launch/mobile-app-performance-tips/>
- 21.** "DNS Performance Analytics and Comparison." DNSPerf, <https://www.dnsperf.com/>. Accessed 23 July 2019.
- 22.** Nielsen, Jakob. "Response Times: The 3 Important Limits." Nielsen Norman Group, <https://www.nngroup.com/articles/response-times-3-important-limits/>. Accessed 26 July 2019.
- 23.** "Cloudflare Case Study: Crisp." Cloudflare, <https://www.cloudflare.com/case-studies/crisp/>. Accessed 26 July 2019.

- 24.** "ITIC 2017 – 2018 Global Server Hardware, Server OS Reliability Report." Information Technology Intelligence Consulting (ITIC) Corp, <https://cloud.kapostcontent.net/pub/3dee045e-4b09-48e3-9077-8b126a9f2093/itic-2017-2018-global-server-hardware-server-os-reliability-report.pdf>. Accessed 26 July 2019.
- 25.** "Server FAIL: 3 signs your server is on the brink." Spiceworks, <https://www.spiceworks.com/it-articles/3-signs-server-about-to-fail/>. Accessed 26 July 2019.
- 26.** Time is calculated based on speed of light traveling along fiber

Appendix: Performance Metrics to Know

Load time: The time it takes for a web browser to finish downloading and displaying the webpage (typically measured in milliseconds).

Time to First Byte (TTFB): How long it takes for the browser to receive the first byte of data from the web server (measured in milliseconds).

Requests: The number of HTTP requests for resources that a browser has to make in order to fully load the page.

DOMContentLoaded (DCL): This measures the time it takes for the full HTML code of the page to be loaded; images, CSS files, and other assets don't have to be loaded.

Time to above-the-fold load: 'Above the fold' refers to the area of a webpage that fits in a browser window without a user having to scroll down.

First Contentful Paint (FCP): The time at which content first begins to be 'painted,' or rendered, by the browser. This can be any aspect of the page, including text, images, or non-white background colors.

Page size: The total file size of all content and assets that appear on the page.

Round trips: This metric counts the number of round trips necessary to load the webpage. When an HTTP request travels all the way from a browser to the origin server, and the server's HTTP response goes all the way back, this constitutes a round trip.

Render-blocking round trips: A subcategory of round trips. 'Render blocking' refers to resources that have to be loaded before anything else can be loaded.

Round trip time (RTT): The amount of time the round trips take.

Render-blocking resources: Certain resources, like CSS files, block other parts of the page from being loaded if they are not yet loaded. The more render-blocking resources a webpage has, the more chances there are for the browser to fail to load the page.



1 888 99 FLARE | enterprise@cloudflare.com | www.cloudflare.com

© 2019 Cloudflare Inc. All rights reserved.
The Cloudflare logo is a trademark of Cloudflare. All other company and product names may be trademarks of the respective companies with which they are associated.

REV: 190730